



"Innovative Solutions at Work"

ONLINE ONLY AUCTION

7525 SUDER AVE., ERIE, MI 48133

www.proxibid.com/miller-danberry



OFFERING SUMMARY

Auction Date/Time: Begins Jan. 27th
 Bidding ends @
 5:00 PM Feb. 25th
 (Bid Online)

Building Size: 10,295 SF

Lot Size: 10.0 Acres

Year Built: 1956

Zoning: AG

County: Monroe

Real Estate Taxes: \$830.42 (exempt)

PROPERTY OVERVIEW

Former school building more recently used as church.

PROPERTY HIGHLIGHTS

- Opening bid \$10,000
- \$5,000 bank check deposit required day of sale
- Close in 7 business days
- **Online bidding site:** www.proxibid.com/miller-danberry

DEMOGRAPHICS

	1 MILE	5 MILES	10 MILES
Total Households	268	17,074	126,299
Total Population	648	43,475	317,062
Average HH Income	\$62,106	\$55,139	\$47,699

The information contained herein is from sources deemed reliable, but no warranty or representation is made as to accuracy thereof. It is subject to correction of errors, omissions, change of price prior to sale or withdrawal from market, all without notice. Further, no warranty or representation is made in regard to any environmental condition that may or may not exist.

JERRY MILLER, CCIM
 419.392.6835
jmiller@millerdanberry.com

1656 Henthorne Rd Suite 200, Maumee, OH 43537 | 419.877.7777 | www.millerdanberry.com



"Innovative Solutions at Work"

NEW BEGINNINGS

7525 SUDER AVE., ERIE, MI 48133



JERRY MILLER, CCIM

419.392.6835

jmiller@millerdanberry.com

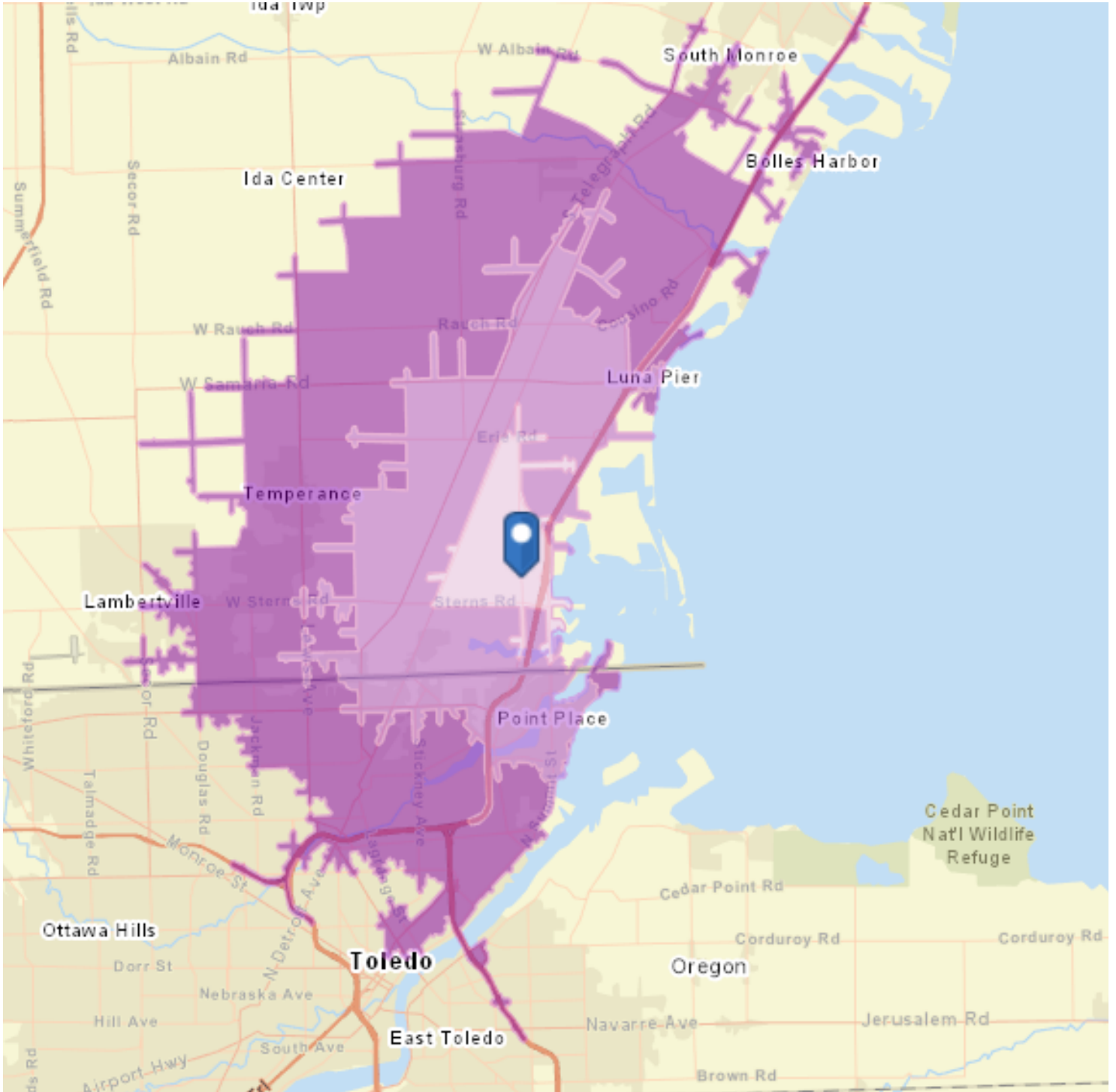
1656 Henthorne Rd Suite 200, Maumee, OH 43537 | 419.877.7777 | www.millerdanberry.com



DRIVE TIMES

7525 SUDER AVE., ERIE, MI 48133

"Innovative Solutions at Work"



JERRY MILLER, CCIM

419.392.6835

jmiller@millerdanberry.com

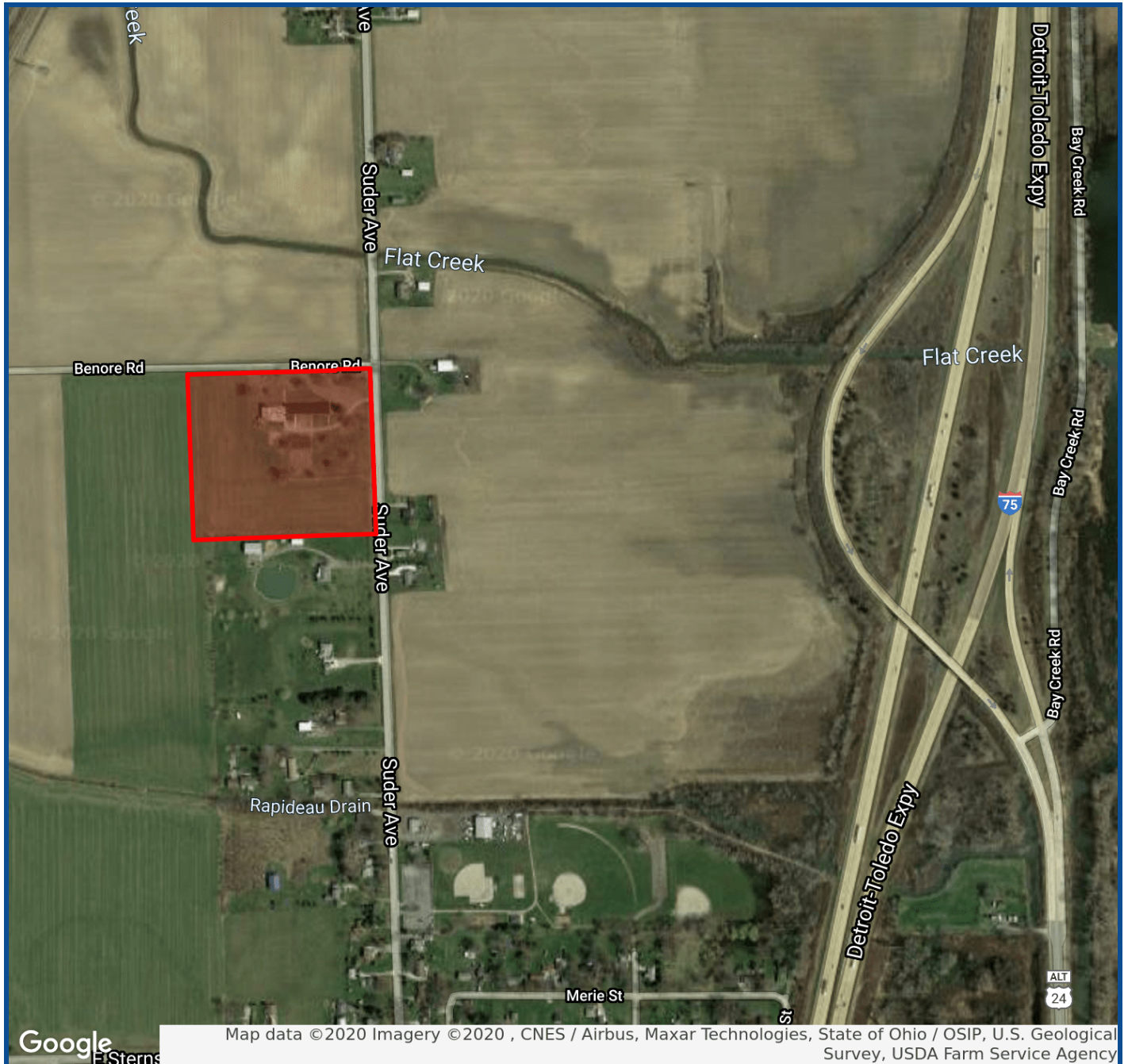
1656 Henthorne Rd Suite 200, Maumee, OH 43537 | 419.877.7777 | www.millerdanberry.com



"Innovative Solutions at Work"

NEW BEGINNINGS

7525 SUDER AVE., ERIE, MI 48133



JERRY MILLER, CCIM

419.392.6835

jmiller@millerdanberry.com

1656 Henthorne Rd Suite 200, Maumee, OH 43537 | 419.877.7777 | www.millerdanberry.com